

## Bhojpal Builders

With a modest beginning in 1993, the Bhojpal Group of Companies has today emerged as one of the renowned and trustworthy developers of Bhopal. Its distinction lies in the varied scale and momentum of the projects it has created till date putting forth a striking portfolio. The projects have further enhanced the distinct lifestyle of Bhopalites.

### SHRI RAMESHWARAM EXTENSION

A campus of 150 independent well-designed quality homes and a shopping center comprising 50 shops.

### SHRI RAMESHWARAM DELUXE

More than sixty 2, 3 & 4 BHK independent / duplex bungalows & a shopping center having 30 shops. The project is nearing completion with ready possession.

### SHRI KRISHNAPURAM

More than 800 well-established homes / plots at Samardha with all-embracing facilities such as School, Park, Worship places etc. It is developed in four phases.

### SHRI RADHAPURAM

It encompasses 311 Single and duplex villas. 75% of the construction work has already been completed & sold.

### BHOJPAL ESTATE

A multi-storied secured campus with lift facility, consisting 40 Deluxe 2/3 Bedroom flats at E-8, Gulmohar colony, Bhopal.

### PARK VIEW APARTMENT

A multi-storied building of extraordinary flats in E-7, Arera Colony, Bhopal.

## Suresh Babu and Partners (SBP)

Suresh Babu and Partners (SBP), is led by Mr. Suresh Babu and his team of architects & engineers. A member of the Indian Green Building Council (IGBC), SBP specializes in High-rise Residences, Hotels, Commercial Complexes, Integrated Townships, Educational Institutes, Hospitals and SEZ. With over two decades of hands-on project experience, Mr. Suresh Babu has conceptualized and designed projects for Real Estate & Corporate companies from India, Middle East, Russia etc. The firm strongly believes in creating environment friendly architecture for sustainable future.

The Promoters:



### **BHOJPAL BUILDERS & DEVELOPERS (P) LTD.**

Mezzanines Floor, R. K. Tower, 93-94, Zone-II, M.P. Nagar, Bhopal - 4602 011.

Tel.: 0755 - 429 3294, 267 9120 | E-mail: bhojpalbuilders@gmail.com | www.bhojpalbuilders.co.in

for more details & site visit contact: Cell: 94065 68500, 94065 68501, 94250 19086

This brochure is purely conceptual & not a legal offering.

All visual photographs used in this brochure are artists impressions. All specifications, sizes & layout etc. are tentative & subject to such variations, additions, modifications as decided by the Architects or by the Promoters.

## Epitomizing Cultivated Beauty



Shree Krishna  
heights  
an exemplary grandeur

Katara Hills, Barai, Bhopal.

## *A complex of supremeness*

Bringing you the new paradigm of refinement, 'Shri Krishna Heights'; a premium comprehensive complex cultured with an air of splendor & privacy. The complex offers 28 multi-storied towers elegantly crafted on 10 acres of land which accentuates the bliss of modern age. It enthralls 2, 3 & 4 BHK apartments distinctly articulated to dignify your realm of comfort and luxury.

Shri Krishna Heights enriches the summit of grace with exceptional finesse.

Created in an urban integrated Shri Krishna City, Shri Krishna Heights brings home completeness of city life.



## Idyllic residence

## Distinctive refinement



Distinctly located on 80' wide Katara bypass road, very near to 220' wide Hoshangabad Road - Raisen Road (Sahara bypass) Shri Krishna Heights welcomes you to a self-contained world of affluence & serenity. With new Bhopal developing around the corner, the capital city of the heart of India, Madhya Pradesh - Bhopal is all set to break

new grounds in terms of effective planning of infrastructure & wholesome environment balance.

The proximity to the national airport further makes Shri Krishna Heights an ideal location for the travel seekers & families who admire the scenic beauty of nature and covet an abode amidst the world of sumptuousness.

- Vitrified tiles in living room & bedroom
- Wooden flooring in master bedroom
- Decorative main door with wooden frame.
- Granite top platform with stainless steel sink
- Shower panel with multiple jets in master toilet.
- Quality modular switches
- TV & telephone point in living room
- Emulsion paint for internal walls
- Weather proof emulsion for external walls
- Ample natural light
- Adequate water supply
- Sewage treatment plant
- Combo pack for each flat (Invertor-500w + video door phone + DTH connection + telephone connection + letter box + name plate)

## Idyllic residence



## Profound splendor

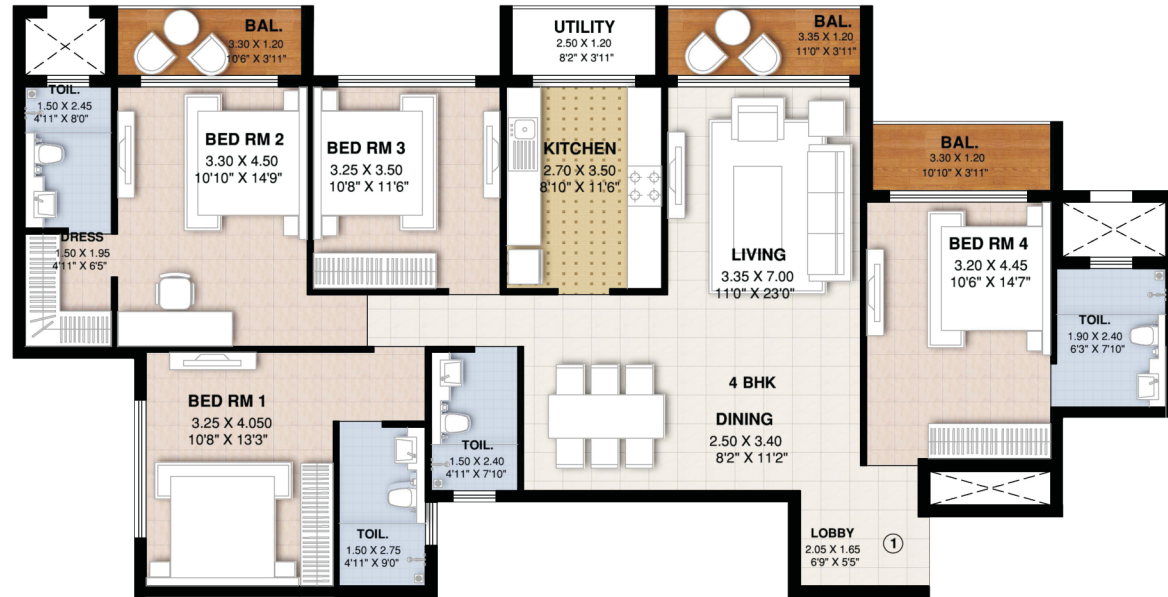


- Lush landscaped gardens
- Enriching open spaces
- Entrance plaza with 24X7 security guard
- Soulful water features
- Tennis court
- Well-equipped gymnasium
- Spic-n-span swimming pool
- Cafeteria & lounge
- Tree-line walkways
- Jogging track
- Kid's play area
- Gated campus
- Power backup for common areas
- CCTV camera for constant surveillance

- 01 Entrance Plaza
- 02 Security
- 03 Lawn
- 04 Jogging Track
- 05 Club House
- 06 Tennis
- 07 Wing-A
- 08 Wing-B, C, D
- 09 Wing-E, F
- 10 Wing-G, H, I
- 11 Wing-J, K, L
- 12 Wing-M, N, O, P
- 13 Wing-Q, R, S
- 14 Wing-T, U, V
- 15 Wing-W, X, Y, Z, AA
- 16 9M. Wide int. Road
- 17 6M. Wide int. Road
- 18 21M. Wide int. Road
- 19 Water Fountain
- 20 Play Ground
- 21 Car Parking
- 22 Proposed 24M. Wide Road
- 23 Proposed 12M. Wide Road
- 24 12M. Wide Int. Road

## Typical Floor Plans

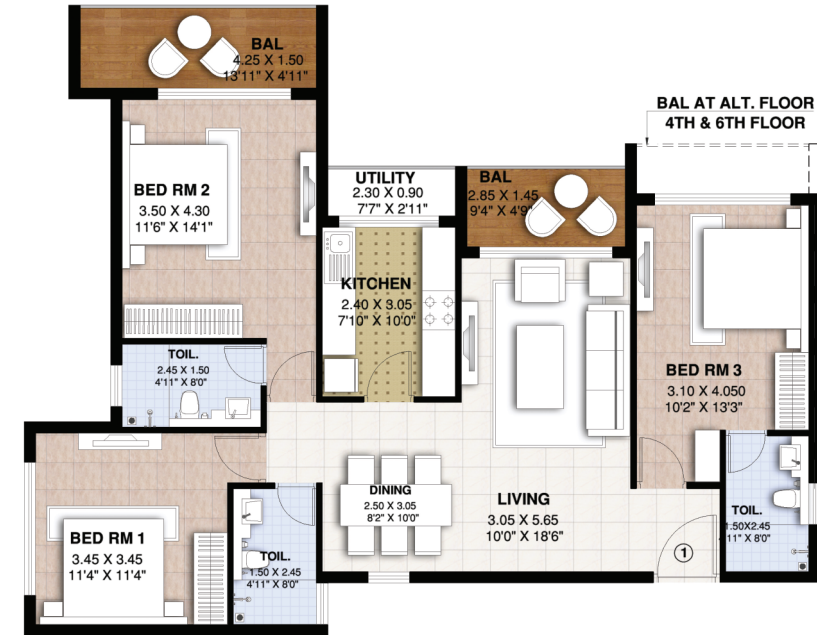
4 BHK - Wing A



Flat No./Type	S/UP Area	
	SQ. MTs.	SQ. FTs.
101 / Lotus 2	198.42	2135.00

## Typical Floor Plans

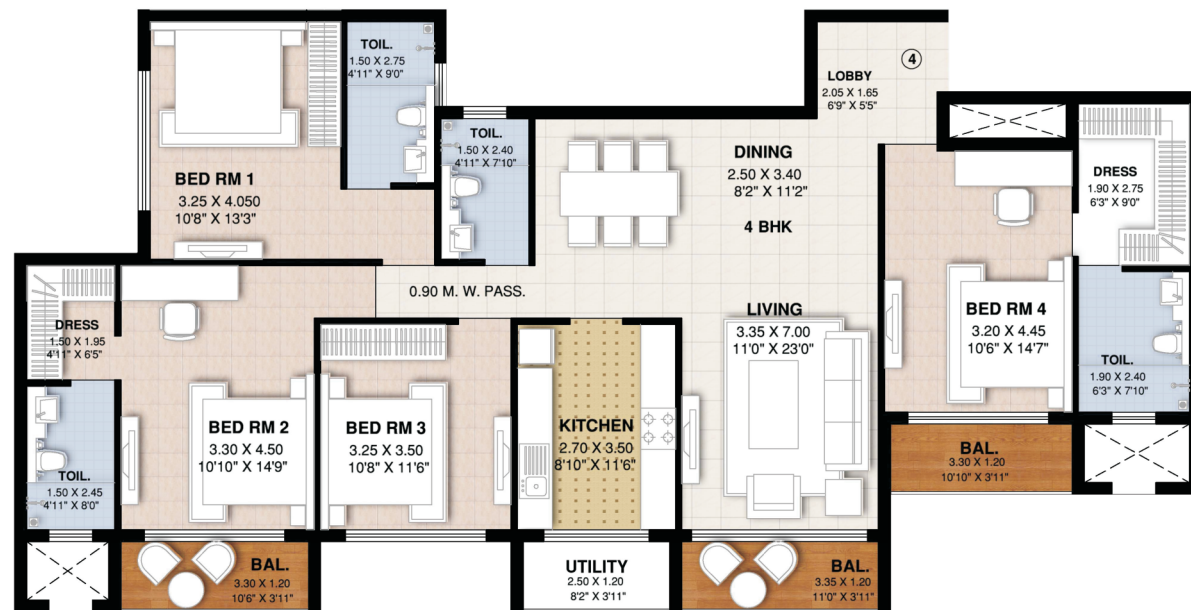
3 BHK (2nd to 6th) - Wing D, E, F, J, K, L, O, P



Flat No./Type	S/UP Area	
	SQ. MTs.	SQ. FTs.
201 / Rose 1	146.84	1580.00

## Typical Floor Plans

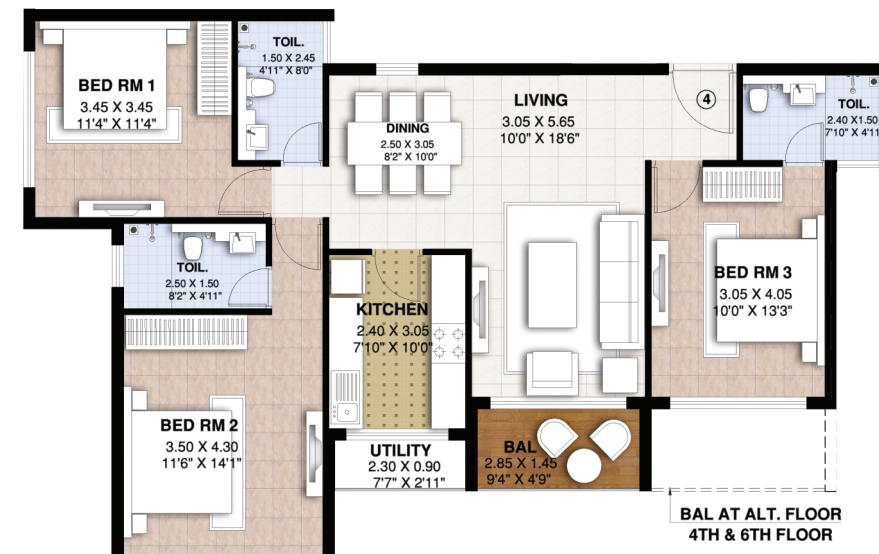
4 BHK - Wing A



Flat No./Type	S/UP Area	
	SQ. MTs.	SQ. FTs.
104 / Lotus 1	205.86	2215.00

## Typical Floor Plans

3 BHK (2nd to 6th) - Wing D, E, F, J, K, L, O, P



Flat No./Type	S/UP Area	
	SQ. MTs.	SQ. FTs.
204 / Rose 2	144.06	1550.00

## Typical Floor Plans

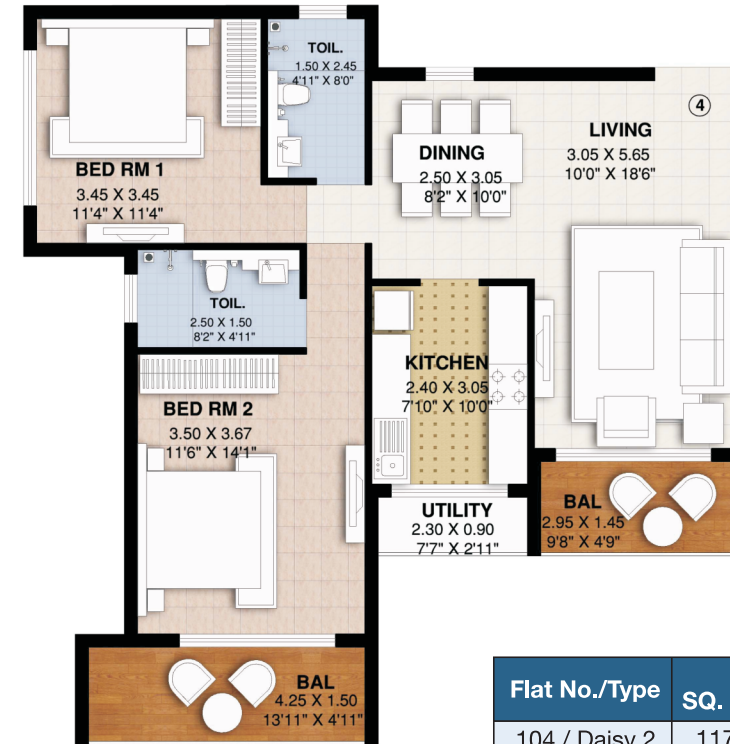
3 BHK - Wing Q, S, T, V



Flat No./Type	S/UP Area	
	SQ. MTs.	SQ. FTs.
104 / Rose 4	129.97	1400.00

## Typical Floor Plans

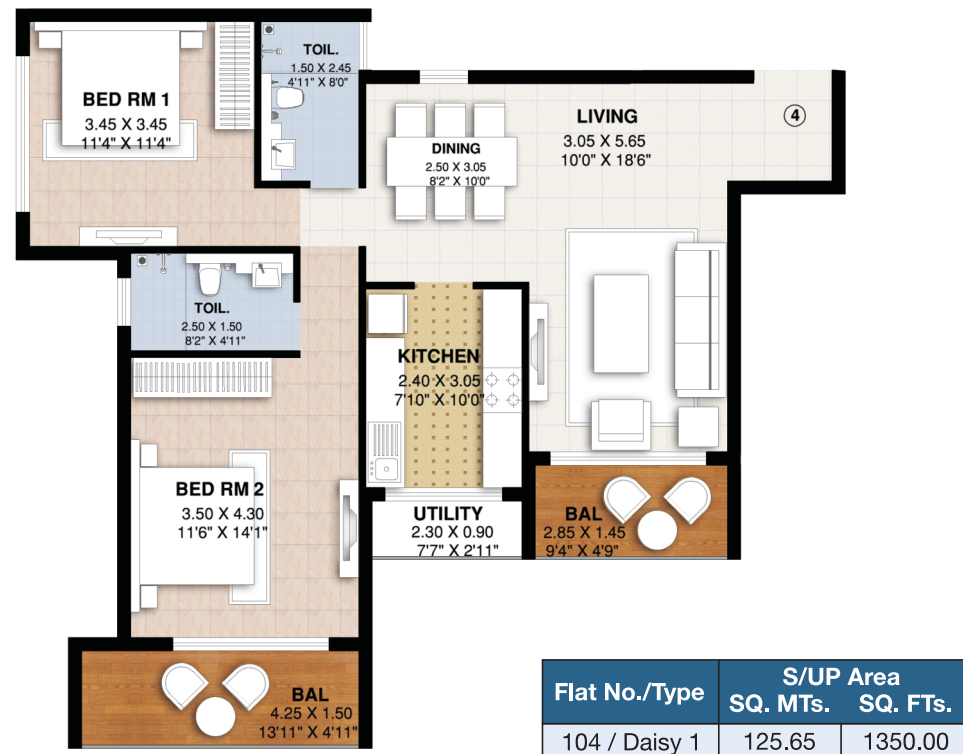
2 BHK - Wing B, C



Flat No./Type	S/UP Area	
	SQ. MTs.	SQ. FTs.
104 / Daisy 2	117.10	1260.00

## Typical Floor Plans

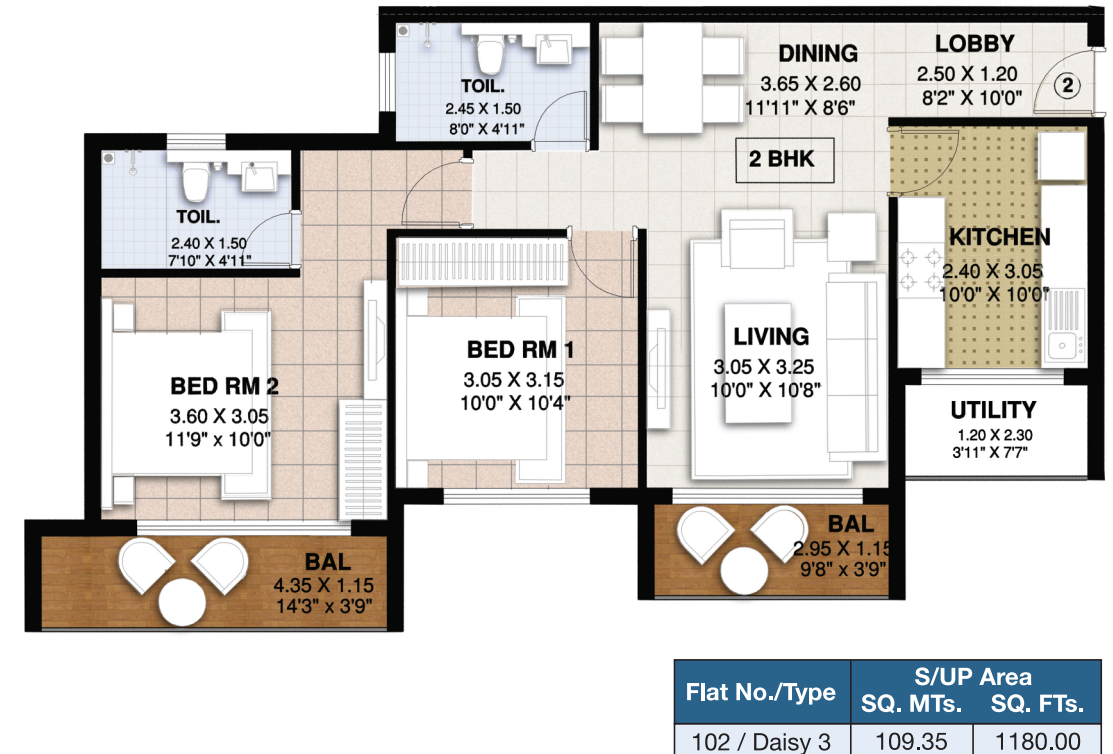
2 BHK - Wing D, E, F, J, K, L, O, P



Flat No./Type	S/UP Area	
	SQ. MTs.	SQ. FTs.
104 / Daisy 1	125.65	1350.00

## Typical Floor Plans

2 BHK - Wing Q, S, T, V



Flat No./Type	S/UP Area	
	SQ. MTs.	SQ. FTs.
102 / Daisy 3	109.35	1180.00